

Fairfax County Precinct-Level Shifts 2017-2021

NOVEMBER 2021



SUMMARY

Market Research Foundation's analysis of the 2021 Virginia gubernatorial election in Fairfax County demonstrates lower-income and minority voters played a pivotal role in the precincts which shifted away from the Democrat candidate between 2017 and 2021.

Precincts which became significantly less Democrat have higher Hispanic and Asian populations, and an average income nearly 50% lower than those which became more Democrat.

The ten precincts which shifted away from the Democrat candidate by the greatest margins have an average Hispanic population of 35.9%, an average Asian population of 24.9%, and an average household income of \$1,042,961. The average Democrat shift in these precincts between 2017 and 2021 is -23.91%.

In comparison, the ten precincts which shifted the most toward the Democrat candidate have an average Hispanic population of 8.3%, an average Asian population of 12.8%,

and an average household income of \$2,017,195. The average Democrat shift in these precincts between 2017 and 2021 is 6.12%.

METHODS

Market Research Foundation created [an interactive map](#) using Esri ArcGIS software to compare the directional shift for each Fairfax County precinct between the 2017 and 2021 gubernatorial elections.

We accessed 2021 vote counts by precinct from Fairfax County, and 2017 vote counts by precinct from the Virginia Secretary of State.

We computed a shift toward or away from the Democratic candidate between 2017 and 2021 using the following: (2021 McAuliffe percentage minus Younkin percentage) minus (2017 Northam percentage minus Gillespie percentage).

Market Research Foundation accessed United States Census data through ArcGIS online and applied Hispanic, Asian, and average income layers to tracts which overlap with precincts.

Results

Figure I shows the precinct-level shift away from the Democrat candidate between 2017 and 2021, with darker regions indicating a greater shift and lighter regions indicating a lesser shift.

Fairfax County Precinct Shifts Away from Democrats 2017-2021

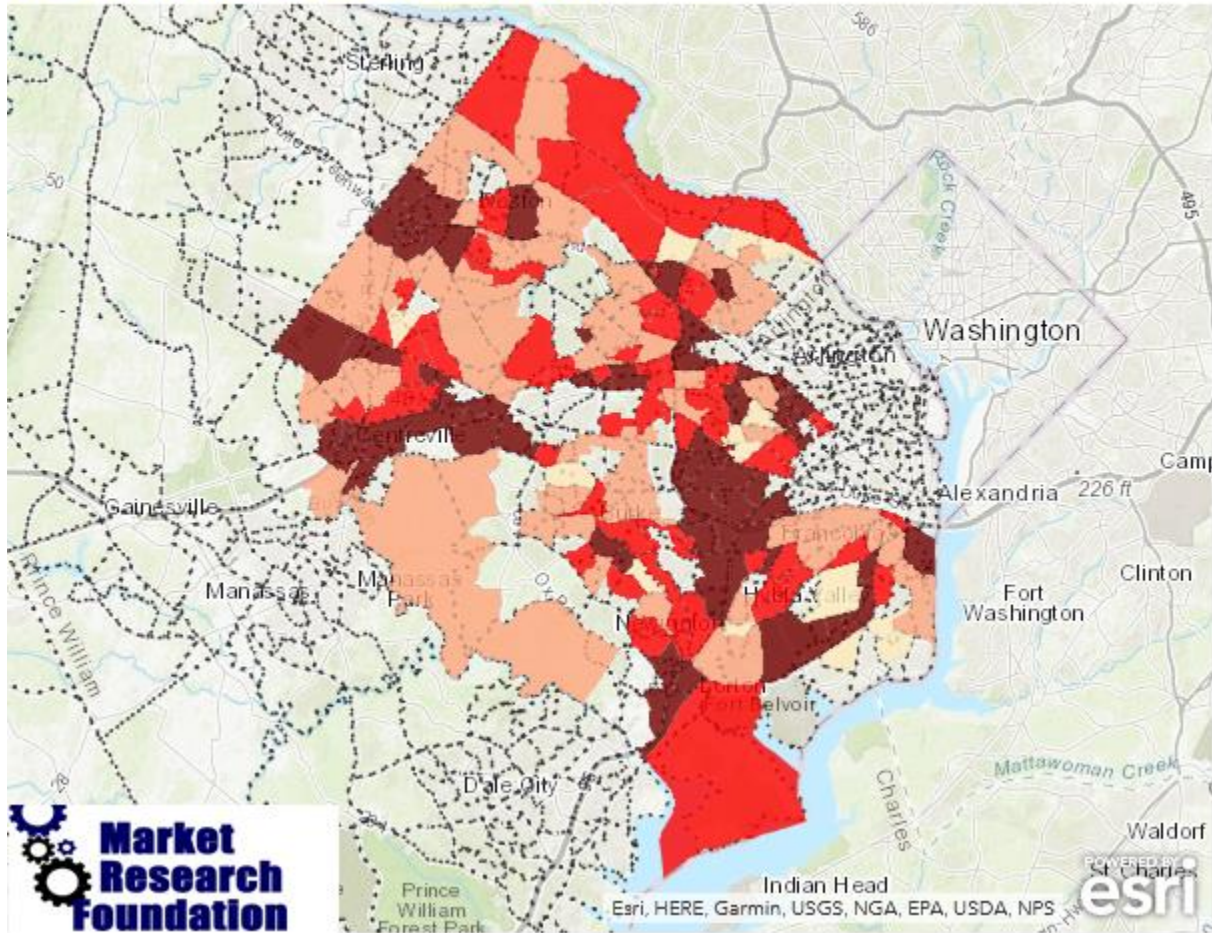


Figure I – Fairfax County precincts with a reduction in Democratic margin from 2017 to 2021

Figure II shows the precinct-level shift toward the Democrat candidate between 2017 and 2021, with darker regions indicating a greater shift and lighter regions indicating a lesser shift.

Fairfax County Precinct Shifts Toward Democrats 2017-2021

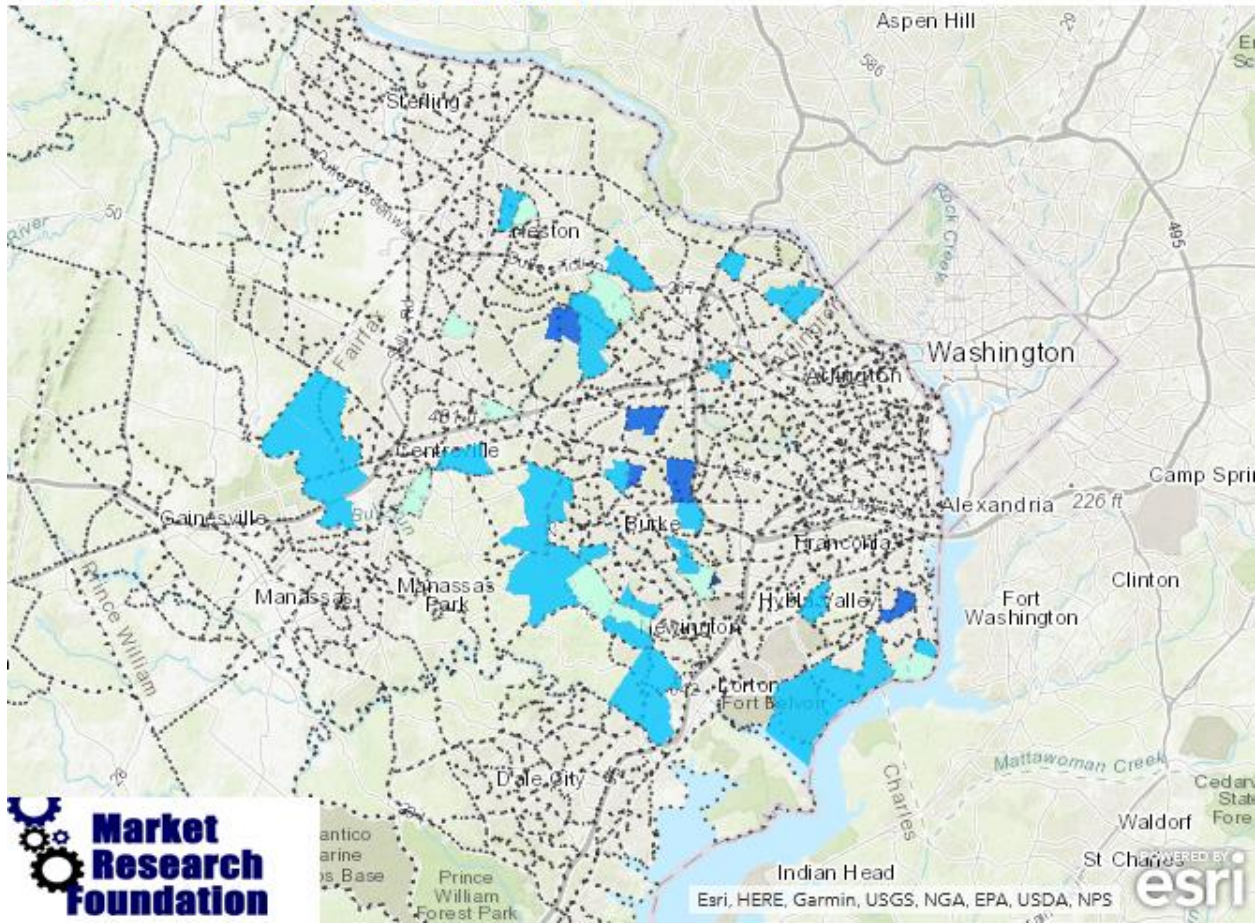


Figure II – Fairfax County precincts with an increase in Democratic margin from 2017 to 2021

The average percentage shift from the Democratic candidate was -7.66%, but the shift ranged from as low as -0.01% in precinct 513 Saint Albans to -36% in precinct 506 Holmes #1.

The largest shift away from the Democratic candidate occurred in precinct 506 Holmes #1 in Falls Church, with a -36.33 shift from the Democrat candidate between the 2017 and 2021. Figure III below shows precinct 506 Holmes #1.

Precinct 506 Holmes #1 had a -36.33% Democrat Shift 2017-2021

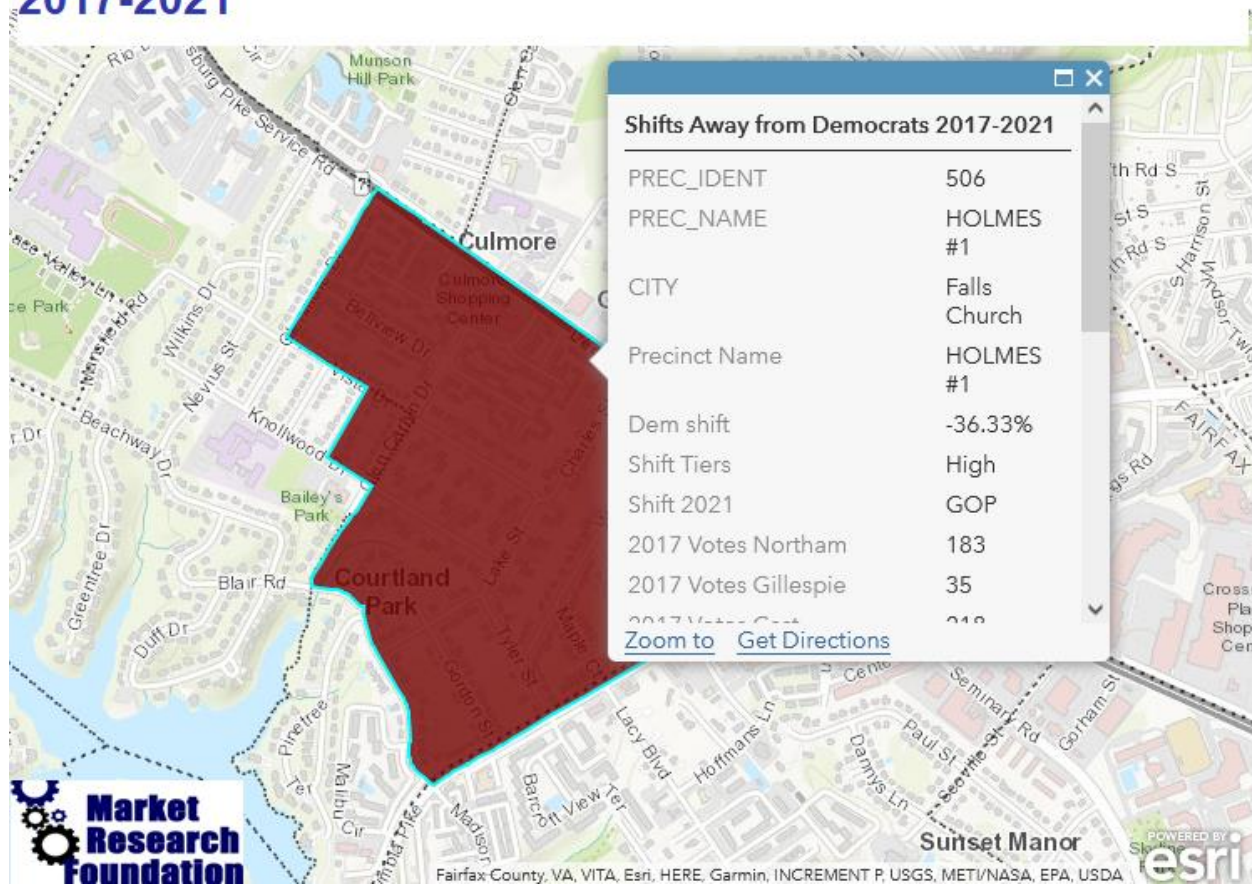


Figure III – Precinct 506 Holmes #1 with a -36.33% reduction in Democratic margin from 2017 to 2021

Our research shows minorities and lower-income Americans played a pivotal role in the precincts which shifted away from the Democrat candidate, while precincts which shifted toward the Democrat skewed whiter and wealthier.

Figure IV shows the map of precincts with a reduction in Democratic margin from 2017 to 2021 beside a map of the Hispanic population by census tract in Fairfax County.

Precincts that Shifted Away from Democrats 2017-2021 (left) and Hispanic Population for Fairfax County (right)

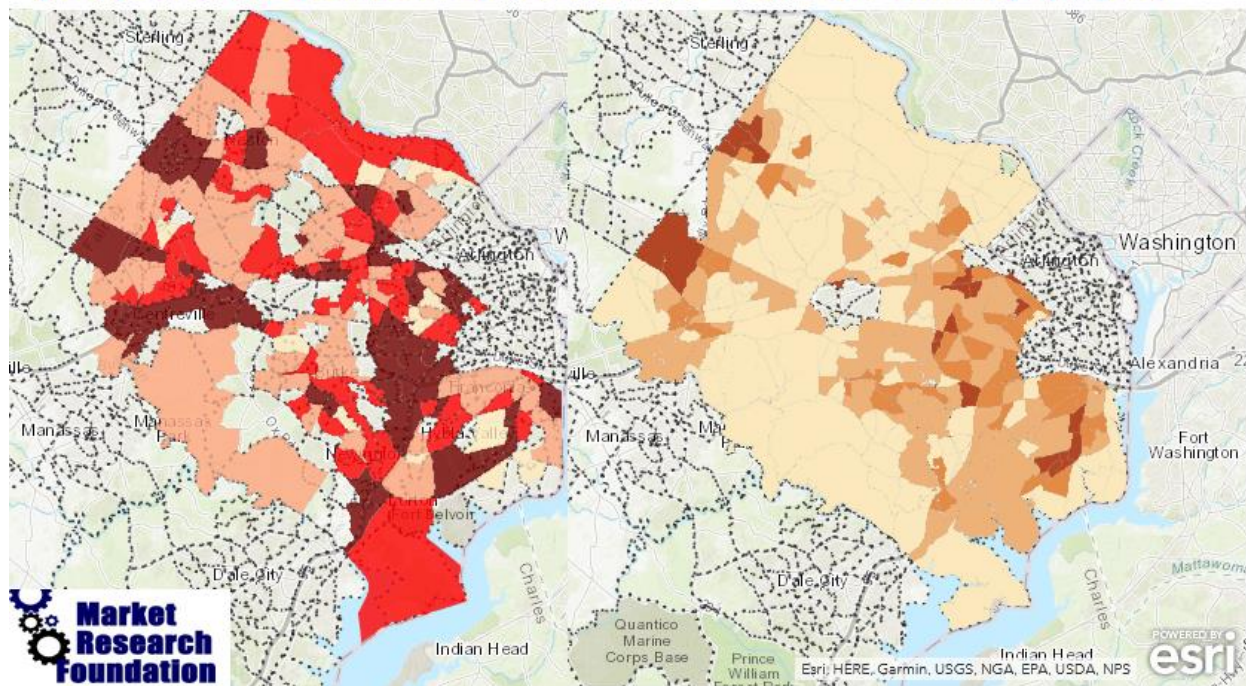


Figure IV – Precincts which shifted away from Democrats (left) and Hispanic population for Fairfax County (right)

Precincts within census tracts with large Hispanic populations contributed to a significant shift away from the Democrat candidate.

The precinct with the greatest percentage shift away from the Democrat candidate (precinct 506 Holmes #1) in Falls Church had a shift of -36.33%. Holmes #1 is inside census tract 510594516.01, and this tract is 77% Hispanic and 8% Asian, with an average household income of \$69,466. Figure V shows the Hispanic percentage in precinct 506 Holmes #1.

Precinct 506 Holmes #1 Shifted Most Toward the GOP 2017-2021 and is 77% Hispanic

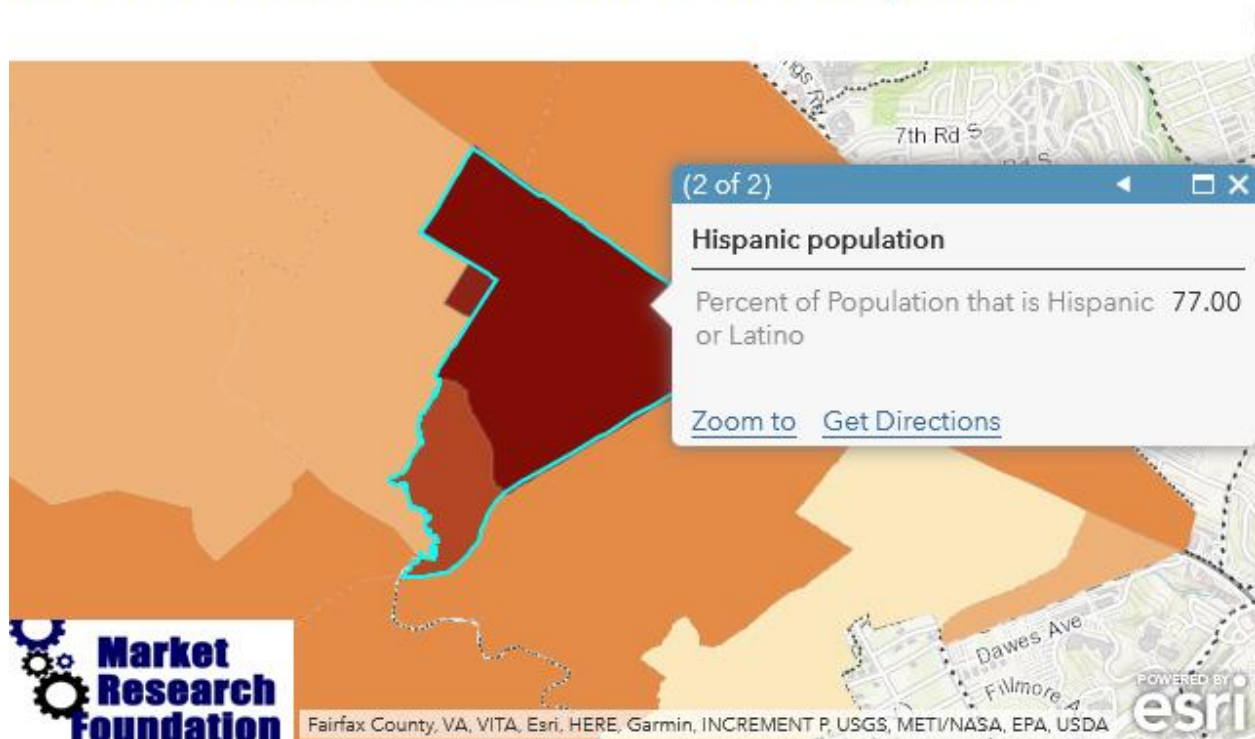


Figure V – Precinct 506 Holmes with a -36.33% reduction in Democratic margin from 2017 to 2021 is 77% Hispanic.

Precincts within census tracts with large Asian populations also contributed to a significant shift away from the Democrat candidate between 2017 and 2021.

Figure VI shows the map of precincts with a reduction in Democrat margin beside a map of the Asian population by census tract in Fairfax County.

Precincts that Shifted away from Democrats 2017-2021 (left) and Asian population for Fairfax County (right)

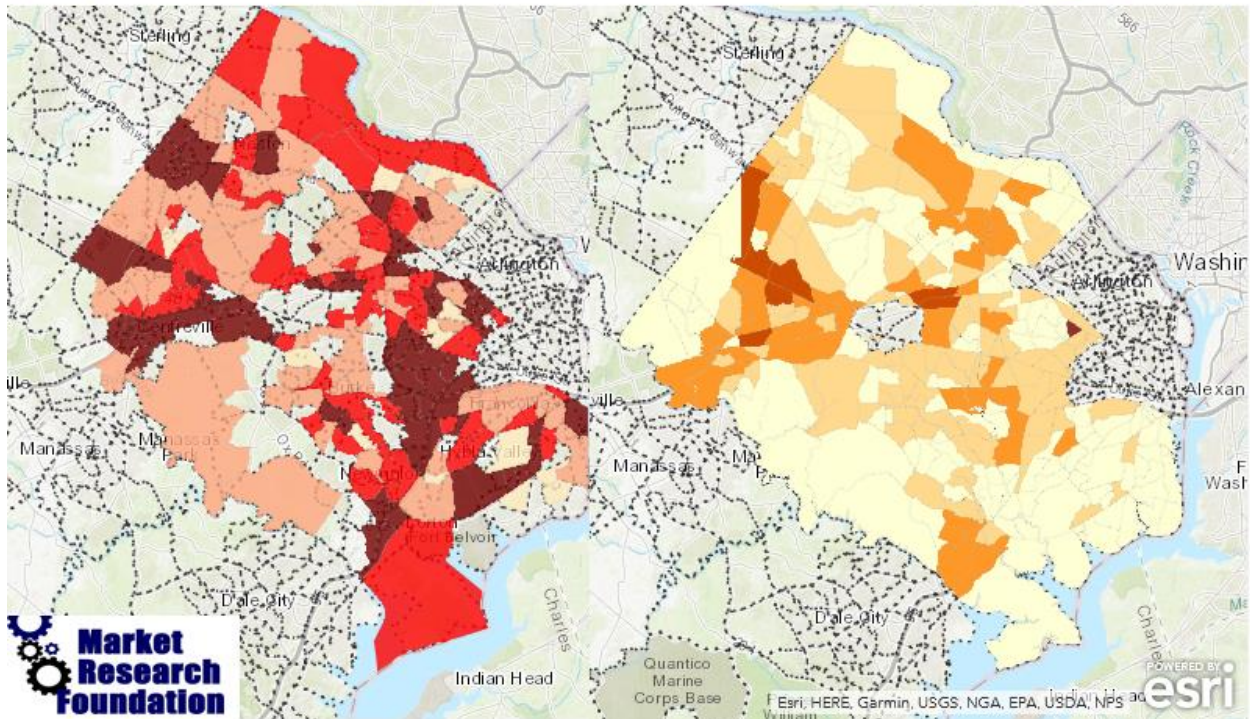


Figure VI – Precincts which shifted away from Democrats (left) and Asian population for Fairfax County (right)

The second largest shift away from the Democratic candidate after precinct 506 Holmes #1 in Falls Church is precinct 516 Weyanoke #1 in Alexandria, with a shift of -30.87%. This precinct is inside census tract 510594525.01 which is 29% Asian and 14% Hispanic, with an average household income of \$128,481. Figure VII shows the Asian percentage in precinct 516 Weyanoke #1.

Precinct 516 Weyanoke #1 Shifted Second Highest Toward the GOP 2017-2021 and is 29% Asian

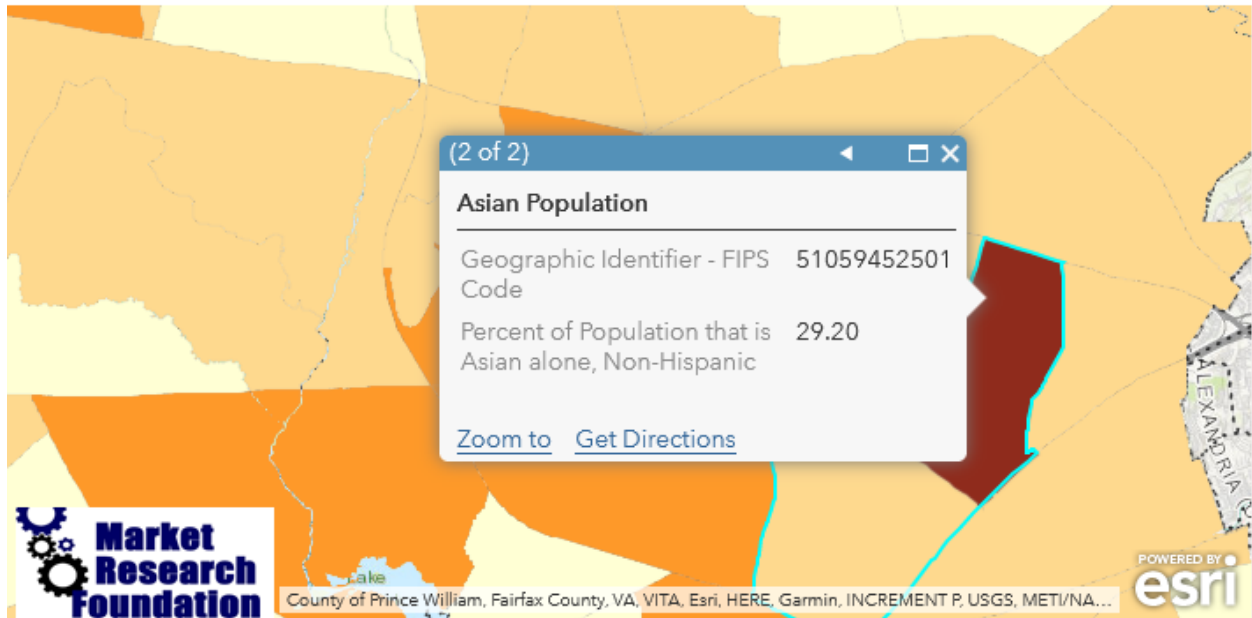


Figure VII – Precinct 516 Weyanoke #1 had a -30.87% reduction in Democratic margin from 2017 to 2021 and is 29% Asian.

The ten precincts which shifted away from the Democrat candidate by the greatest margins have an average Hispanic population of 35.9%, an average Asian population of 24.9%, and an average household income of just over \$100,000.

Table I shows the top ten precincts which shifted away from Democrats between 2017 and 2021.

Top 10 Precincts with Greatest Shift Away from Democrats 2017-2021 (Fairfax County)

Precinct Name	Census Tract	Dem Shift	Hispanic	Asian	Income
HOLMES #1	510594516.01	-36.33%	77%	8%	\$69,466
WEYANOKE #1	510594525.01	-30.87%	14%	29%	\$128,481
LYNBROOK	510594306.00	-25.26%	50%	26%	\$103,407
LORTON	510594221.02	-23.96%	16%	18%	\$114,323
WILLSTON	510594514.00	-21.49%	54%	22%	\$86,135
HERITAGE	510594523.02	-21.20%	61%	15%	\$76,511
WESTLAWN	510594505.00	-21.01%	39%	20%	\$114,819
EDSALL	510594525.01	-20.43%	14%	29%	\$128,481
POWELL	510594915.01	-19.53%	2%	56%	\$138,619
BRISTOW	510594522.00	-19.02%	32%	26%	\$82,719
Average		-23.91%	35.90%	24.90%	\$104,296



Table I – Top ten precincts with greatest reduction in Democratic margin from 2017 to 2021 with demographics

In comparison, the precincts which shifted the most toward the Democrat candidate are significantly whiter and have an income nearly 50% higher than that of the precincts which shifted GOP.

Table II shows the top ten precincts which shifted toward Democrats between 2017 and 2021.

Top 10 Precincts with Greatest Shift Toward Democrats 2017-2021 (Fairfax County)

Precinct Name	Census Tract	Dem shift	Hispanic	Asian	Income
GREENSPRING	510594316.00	13.53%	9%	20%	\$119,222
DIFFICULT RUN	510594612.01	7.21%	6%	13%	\$285,934
LITTLE RUN	510594408.00	6.60%	11%	20%	\$188,782
CHAPEL	510594408.00	5.93%	11%	20%	\$188,782
MANTUA	510594401.00	5.19%	4%	21%	\$196,080
KIRKSIDE	510594154.02	5.14%	16%	7%	\$157,821
WESTGATE	510594162.00	4.68%	12%	4%	\$95,260
WAYNEWOOD	510594157.00	4.59%	6%	2%	\$244,592
POPES HEAD	510594920.00	4.20%	3%	10%	\$260,744
SALONA #2	510594704.00	4.12%	5%	11%	\$279,978
Average		6.12%	8.30%	12.80%	\$201,720



Table II – Top ten precincts with greatest rise in Democratic margin from 2017 to 2021 with demographics